

吉利汽车
GEELY AUTO

Geely after-sales diagnostic instrument platform



Quick
Start

After purchase, please open the package and check the attached attachment list (the following list and the attached pictures are for reference only, please refer to the actual packing list and the real thing). Geely after-sales diagnostic instrument platform mainly consists of the following hardware and software:

Hardware part



SmartBox3.0 VCI device

It is used to connect the vehicle diagnostic seat to collect vehicle data, and then transmit to the laptop through WiFi or USB cable for analysis.



OBD II extension cable

Use to cct the Smartbox3.0 VCI device to the vehicle diagnostic seonreat.



D-link cardbus

Install on your laptop and wireless communication with SmartBox3.0 VCI device



USB cable

Used for connecting PC to Smartbox3.0 VCI device for wired communication



T-flash card

Preloaded with geely ODX diagnostic software installation package g-ads-odx-pe.exe and SmartBox3.0 VCI device driver smartbox_3.0_setup.exe.



TF card reader

Install the TF card into the reader, then plug it into a PC, read and install the diagnostic software and driver installation package in the TF card.



G-ADS-ODX-PE.exe

Geely ODX diagnostic software installation package G-ADS-ODX-PE.exe



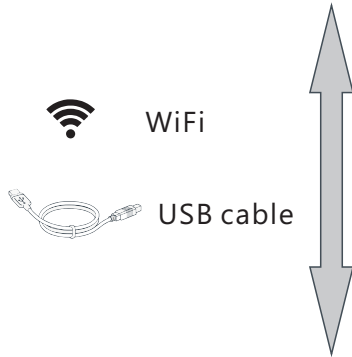
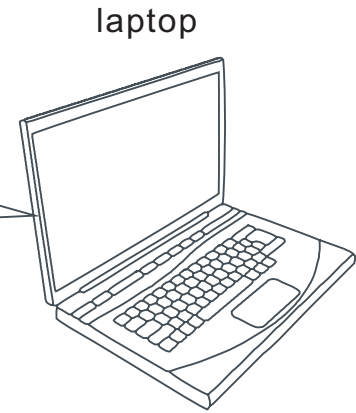
SmartBox3.0 VCI device driver Smartbox_3.0_Setup.exe

The above software installation packages and drivers are in the TF card and need to be installed on a PC (to be purchased separately) before vehicle diagnosis.

Software part

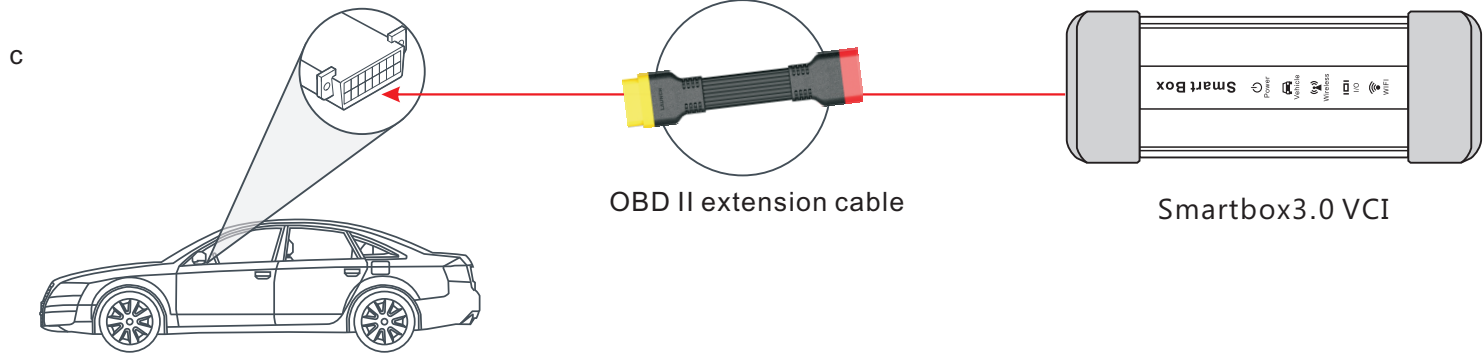
*The computer must satisfy the following conditions:

1. The network has been connected and the network is in good condition.
2. G-ADS-ODX-PE.exe has been installed.
3. Smartbox_3.0_Setup.exe has been installed.



*The computer and Smartbox3.0 VCI devices communicate in two ways:

- Wifi communication - When using this kind of communication mode, the computer needs to plug in the wireless network card that comes with it and carry on the corresponding communication setting (for specific Settings, see the section "communication Settings") .
- USB communication (recommended way) - When using this kind of communication mode, one end of the USB cable is connected to the USB port of the VCI device, and the other end is connected to the USB port of the computer.



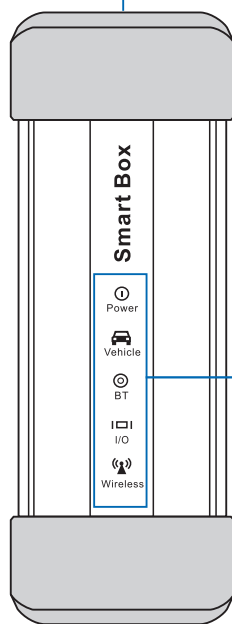
C

SmartBox 3.0 VCI(Vehicle Communication Interface) device is mainly used to collect dynamic data on the vehicle and then send it to a laptop for parsing. This VCI device integrates LED indicator light and the user can know the working state of the VCI device in real time through the indicator light display.

Technical parameters:

working voltage	DC 9V~36V
RAM	256MB
ROM	8GB
USB	Type B x 1
Bluetooth	Bluetooth4.0 dual-mode
WiFi	2.4G / 5GHz dual-band
Working temperature	-10°C~50°C
Storage temperature	-20°C~70°C

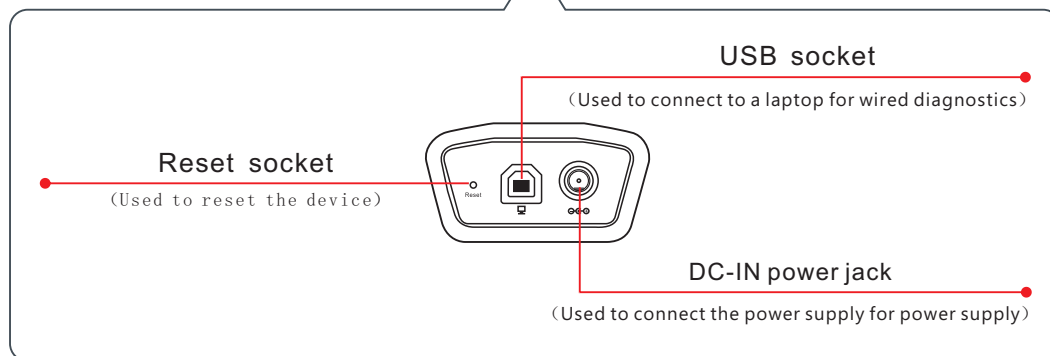
Diagnostic port
(For connecting OBD II extension cable)



LED indicator lamp

Used to display the working status of VCI device in real time. from top to bottom:

- 1、 Power indicator: It's red and always on when the VCI device is powered on.
- 2、 Vehicle (Vehicle communication) indicator:
 . This indicator lights up and flashes when the VCI device communicates with the vehicle.
 . This indicator will not be on When there is no communication between the VCI device and vehicle.
- 3、 BT (Bluetooth) Communication indicator: This indicator lights up when the VCI device communicates using bluetooth.
- 4、 I/O (USB) Communication indicator: This indicator lights up when connecting the VCI device to the laptop using a USB cable.
- 5、 Wireless Communication indicator: This indicator is on when the VCI device is communicating with WiFi.



1. Install software and drivers

2. Communication setting

3. How to connect

4. Settings and Help

1. preparation

Please prepare the following tools:

- laptop(Built-in local network card,the computer operating system can be Windows 7/ Windows 8/ Windows 10, recommended to use Windows 10 system).

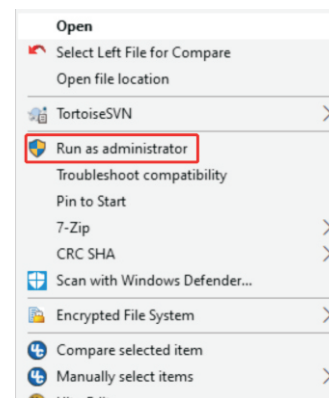


- TF card and TF card reader

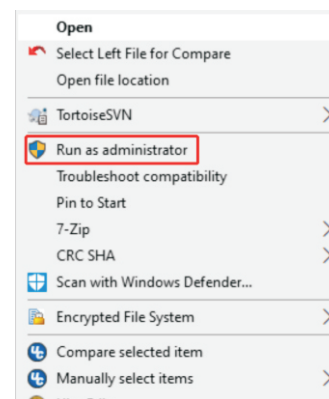


2. Start the installation

- 1、 Insert the TF card into the TF card reader.
- 2、 Then insert the TF card reader into the USB port of the laptop.
- 3、 After the computer recognizes the card reader, open the card reader and check the diagnostic software and driver.
- 4、 Right-click 'G-ADS-ODX-PE.exe',select'run as administrator' and start installation. Once installed, the desktop will generate an icon for 'G-ADS.exe'.



- 5、 Right-click 'smartbox_3.0_setup.exe' and select 'run as administrator' to start the installation. Follow the prompts to install until the installation is complete.



1. Install software and drivers

2. Communication setting

3. How to connect

4. Settings and Help

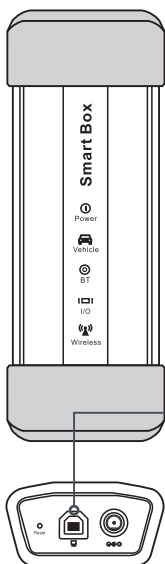
*The laptop and Smartbox3.0 VCI device are available in two types of communication: USB /WiFi.

1、USB communication Setting

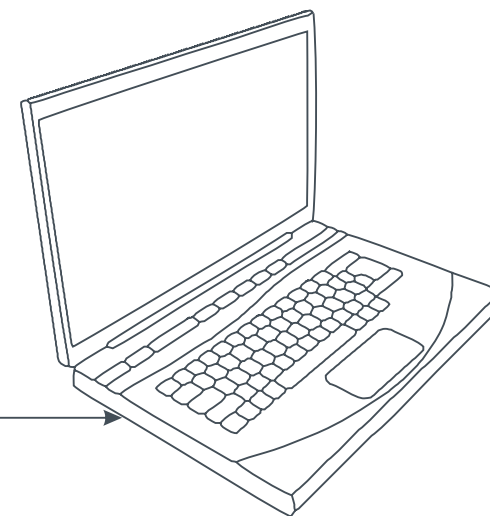
When using this mode of communication, connect one end of the USB cable directly to the b-type USB port of the VCI device and the other end to the USB jack of the computer. The power indicator and I/O indicator on the VCI device will light up after successful connection.

*tip: WiFi can be used for wireless communication during vehicle diagnostic operations. It is recommended to use USB cable for vehicle ECU flash. Because USB communication is the most stable and fastest, and the default connection mode of the diagnostic system is wired, it is recommended that you first use USB wired communication.

VCI device



USB cable



laptop

2、WiFi communication Setting

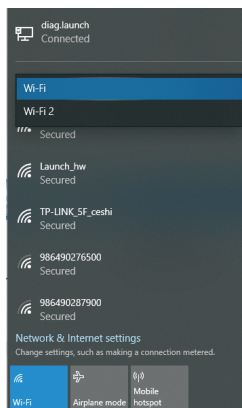
When using this communication mode, the laptop must have two network cards, a USB external network card (the card does not need to install a driver) connected to the VCI device hotspot network for communication, and another network card for connecting the laptop to the network. Specific setup steps are as follows:

1

Insert the attached USB wireless network card into the USB port of the computer, and then open the wireless network card of the laptop.

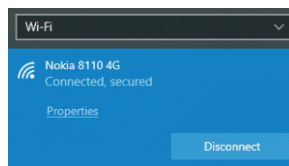
Power on the VCI device (connect one end of the POWER adapter to the DC IN POWER jack of the VCI device and the other end to the POWER socket), and the POWER indicator will light up after power on.

Click the wireless network icon in the lower right corner of the Windows desktop. If two "wlans" (Windows 10 operating system, as shown below) or two "wireless network connections" (Windows 7 operating system) appear, the dual network card will work normally.

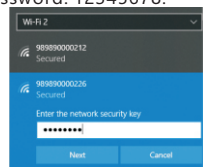


2

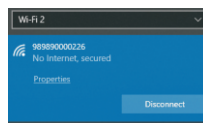
Set up your laptop's own wireless card (such as WLAN) to connect to WiFi hotspots that can connect to the outside network.



Select another wireless card (such as WLAN2) to connect to the WiFi hotspot of the VCI device (the WiFi hotspot name is the product serial number '98XXXXXXXX00', where 'XXXXXXXX' stands for 8-bit characters). The serial number is labeled on the back of the device. Enter the default password: 12345678.

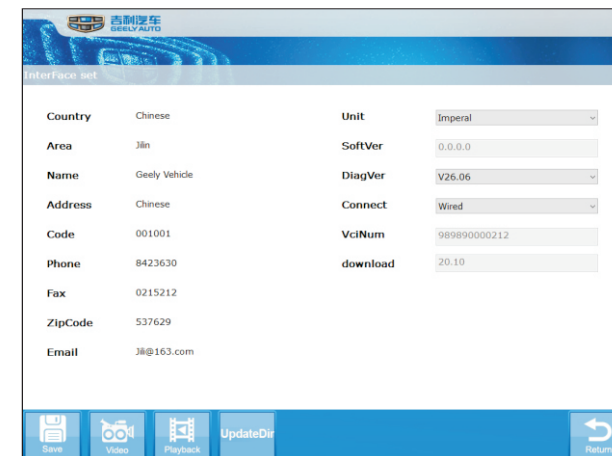


After connecting to the WiFi hotspot of the VCI device, a prompt message will appear as shown in the figure below.



3

The default connection mode used by diagnostic software is "wired", so the connection mode should be set when using WiFi for communication. After launching the software, click the "Settings" button in the main page to enter the Settings page, and switch the "connection mode" setting to "wireless".



1. Install software and drivers

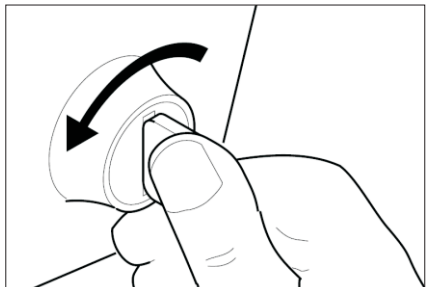
2. Communication setting

3. How to connect

4. Settings and Help

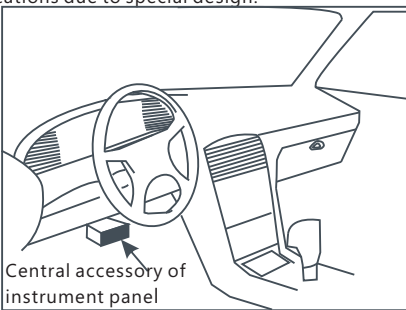
1

Turn off the ignition switch.



2

Find the Data link connector. Most of the diagnostic interface are standard OBD II diagnostic interface, Usually installed on the driver side, 12 inches from the center of the dashboard. It is not excluded that some vehicles are located in other locations due to special design.



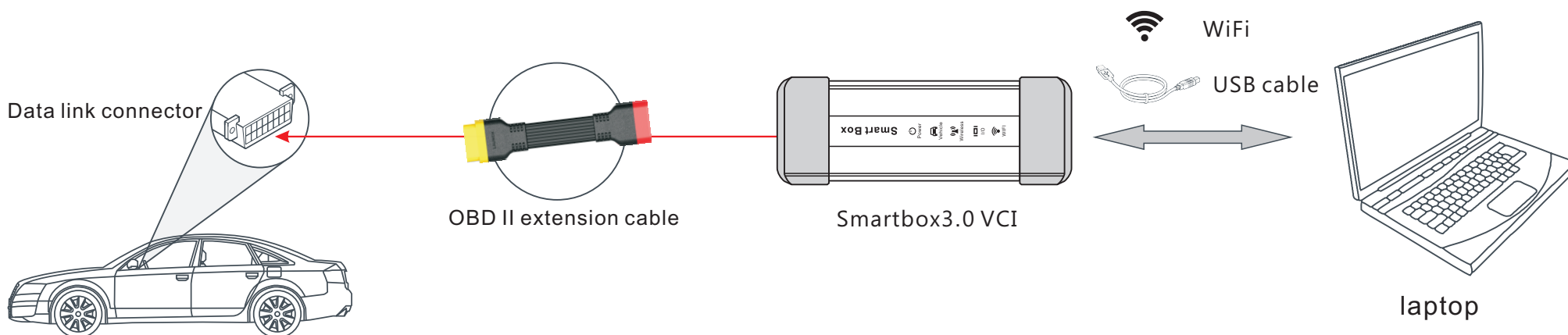
3

Connect one end of the OBD II extension cord to the diagnostic slot of the VCI device and the other end to the Data link connector.

If wired, connect the VCI device to the laptop via a USB cable.

If wifi is used for communication, set it according to the section "2. Communication Setting". After setting, enter into the system Settings and switch the "Connect" (wired by default) to "wireless".

Finally turn the ignition switch on.





Geely after-sales diagnostic instrument platform

The first time you use

1. Install software and drivers

2. Communication setting

3. How to connect

4. Settings and Help

1 After the connection is completed, double-click "G-ADS.exe" on the desktop to launch the diagnostic software, and the page will display as follows.

Users can click the  icon on the page to set the function.



Click the "welcome" button to enter the vehicle's brand selection page. In the lower right corner of the page, there are three buttons, "diagnostic AIDS", "Settings" and "exit".

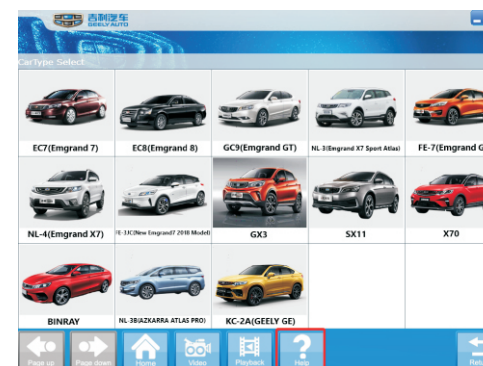
Users can click the  icon on the page to set the function.



2 You can set the software in two ways, such as setting the communication mode and selecting the diagnostic software version. You can also view some information like the software version number.



You can click the help button on the page to enter the help document page, which will teach you how to use the system.



1

Run the client software

double-click "G-ADS.exe" on the desktop to launch the diagnostic software, and the page will display as follows.



2

Select vehicle brand

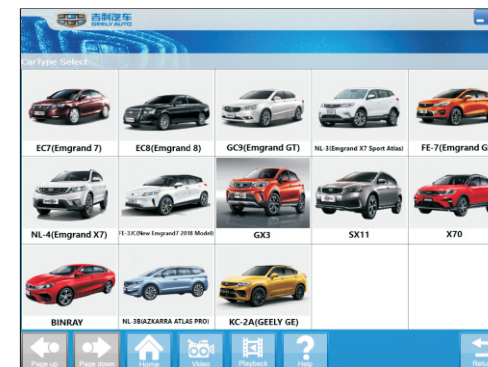
Click the "welcome" button to enter the vehicle's brand selection page. There are three brands, "GEELY AUTO", "GLEAGLE" and "Englon Automobile". Selects the corresponding brand based on the vehicle diagnosed.



3

Select vehicle type

Select the correct vehicle type in the vehicle type selection page and click the vehicle type icon.



Function button display area - If the button is grayscale, the current operation cannot be performed.

5

Select system

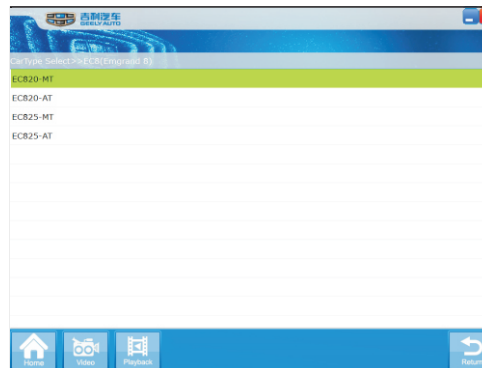
Select the system to diagnose.



4

Select vehicle subtype

Select vehicle subtypes based on vehicle information.



- Home : Back to the vehicle brand selection page;
- Video : Records all actions the user has done to the current page.
- Playback : Play back the video you recorded on the screen. Support for fast forward and slow playback.
- Help : Instruct the user to use the system.
- Return : Exit diagnostics.

6

select ECU

Some systems contain different ecus, which the user needs to select based on the actual configuration of the vehicle



7

Perform diagnostic functions for a single system

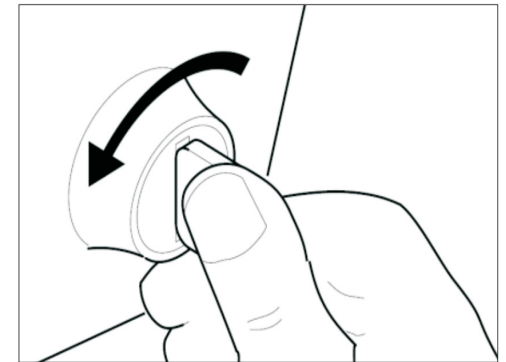
Click on a single system to execute the diagnostic menu, and select different menus to execute according to your own needs.



8

End diagnosis

After diagnosing the vehicle, remove the VCI device from the diagnostic seat of the vehicle. Then turn off the vehicle ignition.



You can choose functions such as "Read DTC", "Clear DTC", "Read Data Stream", etc. Each specific function page is different, you need to follow the correct process.

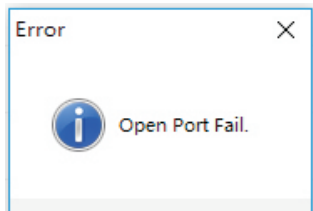
1. PC diagnostic software indicates that the diagnostic software is missing or has been killed by anti-virus software.

problem description : Because PC diagnostic software is not compatible with some anti-virus software, it will prompt the software to be killed by anti-virus software.

solutions : You must uninstall the anti-virus software on your computer and reinstall the software package. After installation, run the client software.

2. "Open Port Fail" is displayed on the page.

problem description : As shown in the following figure, the page prompts "Open Port Fail". It may be caused by failed driver installation or poor USB port contact.



solutions : There are the following

- a. Reinstall the entire program installation package with administrator privileges.
- b. Check whether the connection of VCI device is correct and whether it is powered on. Right-click "my computer" -> "device manager" to check whether the device exists.
- c. change the USB jack and USB cable of the laptop and try again.
- d. Try replacing the system or laptop.

If the above four methods can not solve the problem, you can contact the after-sales remote to see if the hardware damage.

3. Failed to install diagnostic software installation package or driver installation package.

problem description : When installing g-ads-odx-pep.exe or smartbox_3.0_setup.exe, the installation fails and the software cannot run.

solutions : Verify that the computer has administrator privileges and install the diagnostic software installation package and driver installation package with administrator privileges.